

## Deciphering the cells of origin of squamous cell carcinomas

Adriana Sánchez-Danés<sup>1</sup> and Cédric Blanpain<sup>1,2\*</sup>

**Abstract** | Squamous cell carcinomas (SCCs) are among the most prevalent human cancers. SCC comprises a wide range of tumours originated from diverse anatomical locations that share common genetic mutations and expression of squamous differentiation markers. SCCs arise from squamous and non-squamous epithelial tissues. Here, we discuss the different studies in which the cell of origin of SCCs has been uncovered by expressing oncogenes and/or deleting tumour suppressor genes in the different cell lineages that compose these epithelia. We present evidence showing that the squamous differentiation phenotype of the tumour depends on the type of mutated oncogene and the cell of origin, which dictate the competence of the cells to initiate SCC formation, as well as on the aggressiveness and invasive properties of these tumours.

**Squamous cell carcinomas (SCCs).** Cancers that present squamous differentiation, which is visible by the presence of keratin materials.

### Lineage tracing

A method involving experiments that enable the labelling of a cell or a group of cells and assess the fate of these labelled cells and their progeny over time.

### Stem cells

Cells that are at the top of the cellular hierarchy and are characterized by long-term self-renewing capacity and give rise to progenitors, transit-amplifying cells and differentiated cells.

Squamous cell carcinomas (SCCs) are among the most frequent solid cancers in humans<sup>1</sup> and represent a major cause of death worldwide. Their incidence is sharply rising owing to increased exposure to carcinogens, such as ultraviolet radiation related to sun exposure, smoking, alcohol consumption or human papilloma virus (HPV) infection<sup>1,2</sup>. SCCs are classified according to the location where they appear, being frequently found in skin, head and neck, oesophagus, lung and cervix<sup>2–6</sup> and more rarely in pancreas, thyroid, bladder and prostate<sup>7–10</sup>.

During the past decades, great efforts have been made to elucidate the cell of origin of different malignancies<sup>11</sup>. Lineage tracing studies enabled the identification of the cellular hierarchies and lineage segregation that mediate homeostasis and repair of the different tissues from which cancer arises<sup>12</sup> (FIG. 1). Many cancers arise from tissues maintained by the presence of stem cells and progenitors that self-renew and differentiate into the different cell lineages that compose these tissues. Depending on the turnover, differentiated cells and progenitors usually present a shorter lifespan, whereas stem cells reside long term, sometimes throughout the life of the animals. Upon tissue damage, the cellular hierarchy that governs epithelial tissue homeostasis can be altered, and more committed progenitors and even differentiated cells can acquire stem cell potential and contribute to tissue repair<sup>13</sup>. With oncogenic hits, both stem cells and progenitors can serve as the cells of origin in cancer (BOX 1).

The nature of the cells at the cancer origin has also been proposed to determine the differentiation characteristics and aggressiveness of tumours. Tumours arising from progenitors may show lineage-restricted differentiation, whereas tumours arising from stem cells could present multilineage differentiation potential. However, multipotent differentiation of a tumour could also result

from plasticity of tumour cells induced by their oncogenic mutations or by their microenvironment or by neighbouring cells.

In this Review, we discuss recent studies that define the cell of origin of cutaneous, head and neck, oesophageal and lung SCCs, which represent the most common SCCs. We first describe the architecture and cellular hierarchy present in the different epithelia from which the different SCCs arise. Then, we discuss how lineage tracing strategies have been instrumental to identifying the cell of origin in these SCCs. Finally, we discuss how oncogenic mutations and the cell of origin cooperate in determining the differentiation, aggressiveness and metastatic potential of SCCs.

### Architecture of tissues of SCC origin

SCCs arise from epithelial tissues that can be classified as stratified squamous epithelium (which includes epithelia of skin, oesophagus and oral cavity) and non-squamous epithelia (which include airway epithelium). The different types of SCCs have common histological features, such as the presence of squamous differentiation visible by the formation of keratin pearls.

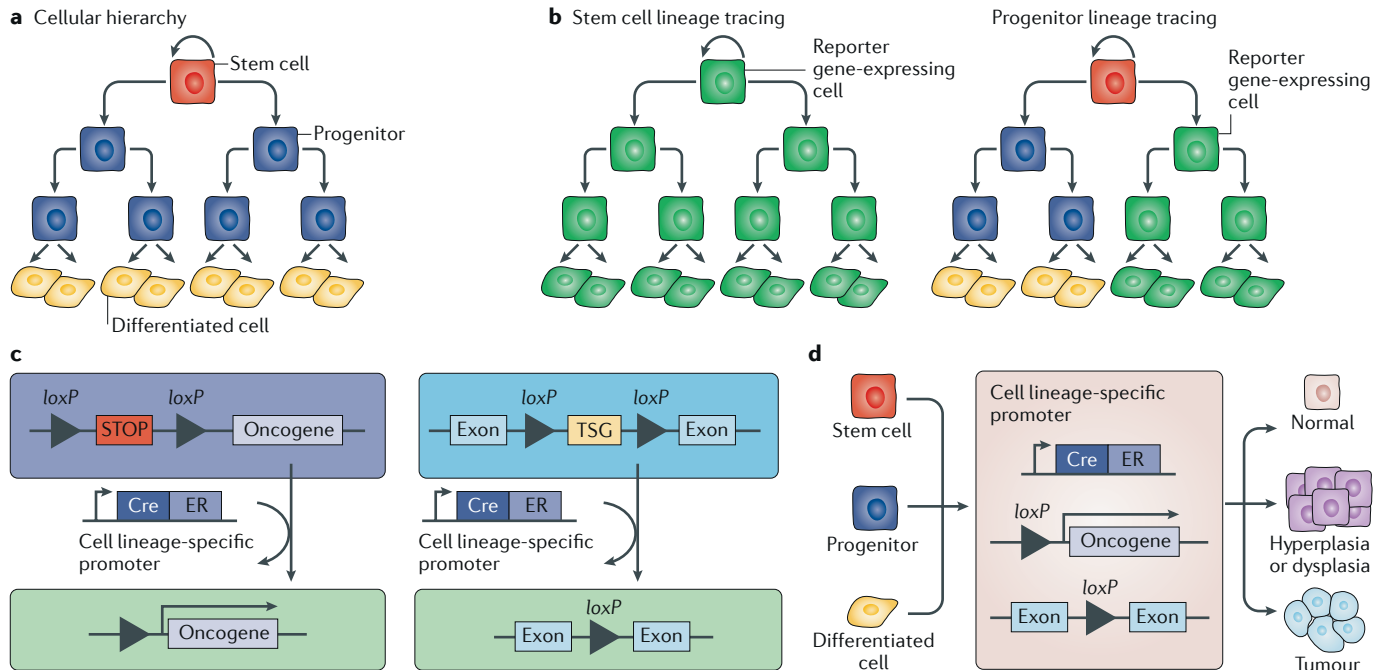
**Skin compartments are maintained by their own resident stem cells.** The skin epidermis acts as the first defensive line to isolate and protect our bodies from the external environment. The mammalian epidermis is a stratified epithelium composed by the interfollicular epidermis (IFE), hair follicles, sebaceous glands and sweat glands<sup>14</sup>. Lineage tracing experiments in mice have shown that during homeostasis, the distinct skin compartments are maintained by their own pool of lineage-restricted stem cells<sup>15–19</sup> (FIG. 2). However, during tissue regeneration such as wound healing, epithelial cells acquire plasticity

<sup>1</sup>Université Libre de Bruxelles, Laboratory of Stem Cells and Cancer, Brussels, Belgium.

<sup>2</sup>WELBIO, Université Libre de Bruxelles, Brussels, Belgium.

\*e-mail: Cedric.blanpain@ulb.ac.be

<https://doi.org/10.1038/s41568-018-0024-5>



**Fig. 1 | Lineage tracing and the cells of origin of cancer.** Many cancers arise from epithelial tissues, which are maintained by stem cells and their progeny. Stem cells are at the top of the cellular hierarchy and have the ability to self-renew and generate progenitors, which can self-renew and give rise to progenitors and terminally differentiated cells (part a). Tamoxifen-induced activation of the Cre recombinase under a cell lineage-specific promoter, for example, a stem cell-specific or progenitor-specific promoter, leads to the elimination of the STOP cassette between loxP sites, resulting in the expression of the reporter gene (part b), the expression of the oncogene or the deletion of the tumour suppressor gene (TSG) between loxP sites (part c) in the respective cell population and its progeny (parts b and c). If a progenitor-specific promoter is used, the reporter gene is expressed in progenitors and their progeny and in differentiated cells but not in the stem cell population. A progenitor usually has a limited lifetime, and thus, the reporter expression may be lost over time (part b, right panel). Conditional activation of oncogenes or deletion of TSGs has enabled the identification of the cells of origin in different mouse tumour models (part d). ER, oestrogen receptor.

### Progenitors

Cells that can self-renew and give rise to terminally differentiated cells. Depending on the proportion of asymmetric and symmetric divisions, progenitors can live long term or short term.

### Stratified squamous epithelium

Epithelium composed of a layer of basal proliferative cells and several suprabasal layers of differentiated cells that express keratins and progressively flatten near the surface, eventually presenting as enucleated cells that are shed from the surface. These amorphous keratinized ghost cells are known as squames. The inner surface of the body is lined with non-keratinized stratified squamous epithelium, which is characterized by superficial cells that are flattened and nucleated.

such as hair follicles and infundibulum stem cells that get activated, migrate towards the wounded region and differentiate into suprabasal cells of the IFE<sup>19–22</sup>.

The IFE is a stratified squamous epithelium maintained by the existence of basal cells with high self-renewing capacities that balance proliferation and differentiation. How precisely the balance between renewal and differentiation is achieved to sustain the homeostasis of the epidermis remains a matter of discussion and may vary between the different parts of mouse skin (ear, paw, tail, ventral and dorsal skin)<sup>23–29</sup>. It was initially hypothesized that the epidermis is maintained by the existence of many small units of proliferation called epidermal proliferative units, which contain slow-cycling stem cells that generate transit-amplifying cells, which, after a defined number of cell divisions, give rise to terminally differentiated cells<sup>30</sup>. Lineage tracing using *Ah*-Cre-ER, a construct that combines the cytochrome P450 1A1 (*Cyp1a1*) promoter with a Cre recombinase fused to the oestrogen receptor (Cre-ER) and leads to expression in a largely ubiquitous manner following the administration of beta-naphthoflavone, has been used to assess the mode of epidermal homeostasis<sup>28,29</sup>. The Cre-ER enables control of the activity of Cre by the administration of tamoxifen, which mediates the translocation of Cre to the nucleus, the recombination of loxP sites and the

expression of the reporter gene (FIG. 1). Clonal analysis of *Ah*-Cre-ER lineage tracing data in the IFE demonstrated that the clone size does not converge on a precise number of basal cells, suggesting that the unit of proliferation has no predefined fixed size. The clone size distribution could be explained by the presence of a single population of equipotent progenitors that balance renewal and differentiation in a stochastic manner<sup>28,29</sup>. More recent studies have demonstrated that epidermal cells are more heterogeneous than initially anticipated and have illustrated that different Cre-ER mice target different stem and progenitor cells with distinct proliferation rates and survival capacities, different long-term renewing capacities and different abilities to mediate long-term skin repair<sup>24–27</sup>. The population of progenitor cells targeted by the involucrin (*Ivl*)-Cre-ER in the mouse tail IFE is identical to the one targeted by the *Ah*-Cre-ER<sup>25,28</sup>. By contrast, keratin 14 (*K14*; also known as *Krt14*)-Cre-ER (*K14*-Cre-ER) targets progenitors and stem cells, the latter of which have long-term survival and divide asymmetrically to give rise to progenitors<sup>25,27</sup> (FIG. 2a,b).

Distinct anatomical regions compose the hair follicles, including the infundibulum, isthmus, sebaceous glands and lower hair follicle regions that produce the hair shaft. These different epidermal regions are maintained by their own pool of resident stem cells<sup>15–19,31</sup> (FIG. 2a). Mouse

# Box 1 | Cellular origin of cancer: stem cells versus committed cells

## Stem cell theory

Stem cells typically persist for a longer duration in the tissue, where they self-renew and give rise to progenitors and differentiated cells. It has been suggested that the longer a cell persists in a tissue, the higher the likelihood that this cell will accumulate the necessary mutations required to become tumorigenic. For this reason, stem cells are commonly considered the cells of origin of cancer<sup>146</sup>. Recent studies have suggested that the rate of stem cell turnover of a given human tissue is correlated with the probability of this tissue to develop cancer<sup>147–149</sup>.

## Committed cell contribution

It has been suggested that the plasticity observed in epithelial tissues during tissue repair plays a role during tumour initiation. Extrinsic cues and/or oncogenic mutations can confer the ability to induce tumour development to already committed cells. In the intestine, activation of the WNT signalling pathway through the expression of a constitutively active form of catenin beta 1 (*Ctnnb1*) together with nuclear factor- $\kappa$ B (NF- $\kappa$ B) activation (through deletion of NF- $\kappa$ B inhibitor alpha (*Nfkb1a*)) or simultaneous expression of constitutively active forms of *Ctnnb1* and *Kras*<sup>G12D</sup> in committed epithelial intestinal cells, using the X-box-binding protein 1 (*Xbp1*) promoter fused with a Cre recombinase and oestrogen receptor (*Xbp1*–Cre–ER), led to the dedifferentiation of previously committed cells into stem-like cells and to tumour development<sup>144</sup>. In the skin interfollicular epidermis, progenitors targeted by involucrin (*Ivl*)–Cre–ER mice require two hits (overexpression of a constitutively activated form of smoothened, frizzled class receptor (*SmoM2*) and *Trp53* deletion) to induce basal cell carcinoma, whereas stem cells require only *SmoM2* expression for tumour development<sup>27</sup>.

hair follicle stem cells can be analysed by using the *K15* promoter-driven, the *K19* promoter-driven or leucine-rich repeat-containing G protein-coupled receptor 5 (*Lgr5*) promoter-driven Cre-inducible constructs *K15*–Cre–PR<sup>18</sup>, *K19*–Cre–ER<sup>31</sup> and *Lgr5*–Cre–ER<sup>15</sup>, respectively. In Cre–PR constructs, Cre is fused to the progesterone receptor (PR), and administration of RU468, a PR ligand, promotes the translocation of Cre to the nucleus and its activity.

**The oral epithelium is maintained by a proliferative basal compartment.** The oral epithelium is composed of areas of keratinized and non-keratinized stratified squamous epithelium (FIG. 2b). The oral cavity and pharynx are coated with non-keratinized stratified epithelium. The masticatory mucosa is keratinized. The larynx is lined by ciliated pseudostratified columnar epithelium, except the vocal cords, which are covered by stratified squamous epithelium. In all these epithelia, cell proliferation is restricted to the basal layer.

Very little is known concerning the identity of stem cells in head and neck epithelia, the location of stem cell niches or how stem cells and progenitors balance proliferation and differentiation. Pulse–chase tritiated thymidine and 5-bromodeoxyuridine (BrdU) experiments revealed the existence of slow-cycling, label-retaining cells in mouse oral epithelia, suggesting the existence of a pool of slow-cycling basal stem cells<sup>32</sup>. Lineage-tracing experiments in mice using the SRY-box 2 (*Sox2*)–Cre–ER and *K14*–Cre–ER transgenic systems, which drive Cre-inducible reporter gene expression in SOX2-expressing or *K14*-expressing basal cells, showed that cells located in the basal compartment present long-term maintenance and can give rise to the different cell types that form the tongue and soft palate<sup>33,34</sup>.

## The oesophagus is maintained by basal progenitors.

The mouse and rat oesophagus has a keratinized squamous epithelium composed of four to five cell layers with a rapid turnover, which is maintained by the presence of proliferative basal cells that are able to self-renew, differentiate and migrate towards the lumen, giving rise to suprabasal layers of terminally differentiated cells<sup>35</sup> (FIG. 2b).

The cellular hierarchy that mediates the homeostasis in mouse oesophageal epithelium remains a matter of intense debate<sup>33,36–42</sup>. Clonal analysis using *Ah*–Cre–ER transgenic mice suggests that the mouse oesophageal epithelium is maintained by a single, equipotent, committed progenitor cell population that balances renewal and differentiation<sup>37</sup>. By contrast, lineage tracing studies using *Sox2*–Cre–ER or *K15*–Cre–PR transgenic mice labelled a subpopulation of mouse basal cells with long-term maintenance and the ability to give rise to the differentiated cells, suggesting that the cells targeted by *Sox2* promoter-inducible or *K15* promoter-inducible Cre mark a progenitor and/or stem cell population with higher self-renewal potential than that of committed progenitors<sup>33,41</sup>. Other studies using fluorescence-activated cell sorting isolation, colony forming assays and 3D organoid assays further suggested the presence of heterogeneity within oesophageal epithelium in terms of marker expression, proliferation kinetics and ability to reform oesophageal epithelium<sup>39,40</sup>. Side by side comparison using the different Cre systems will be important to resolve this apparent discrepancy.

The human oesophagus has a non-keratinized squamous epithelium composed of several layers and two anatomical compartments, the papillae and the interpapillary region. A study in human oesophageal epithelium suggested the existence of two anatomically different compartments, one populated by a relatively quiescent stem cell population (interpapillary region) and the second populated by transit-amplifying cells that give rise to terminally differentiated cells (papillae)<sup>38</sup>. However, in another study, the quiescent cells expressing the stem cell marker CD34 were found at the tip of the papillae, and the highly proliferative cells were found at the interpapillary region<sup>42</sup>.

## Lung compartments are maintained by their own resident stem cells.

Two main compartments constitute mammalian lungs: the airways and the alveoli. The respiratory system enables gas exchange and protects lung epithelia from microorganisms and dust particles that are constantly inhaled. All different lung compartments (trachea, bronchi, bronchioles and alveoli) are maintained by their own resident stem cells during homeostasis<sup>43–47</sup>. Upon tissue damage, differentiated cells present some plasticity and can revert back to a basal stem cell fate<sup>48</sup>.

The trachea and bronchi are lined with a pseudostratified epithelium<sup>49</sup>, which consists of basal cells, secretory cells, ciliated cells and rare neuroendocrine cells. The murine bronchioles are lined with a simple columnar epithelium composed mainly of secretory and ciliated cells, containing some neuroendocrine cells and no basal cells (FIG. 2c).

## Keratin pearls

Keratin-derived amorphous materials arising from the differentiation of tumour cells.

## Transit-amplifying cells

Cells that divide a finite number of times and then terminally differentiate.

## Clonal analysis

The study of the fate, renewal and long-term maintenance of single isolated cells over time.

## Dedifferentiation

A process that occurs when committed or differentiated cells revert to a less committed state.

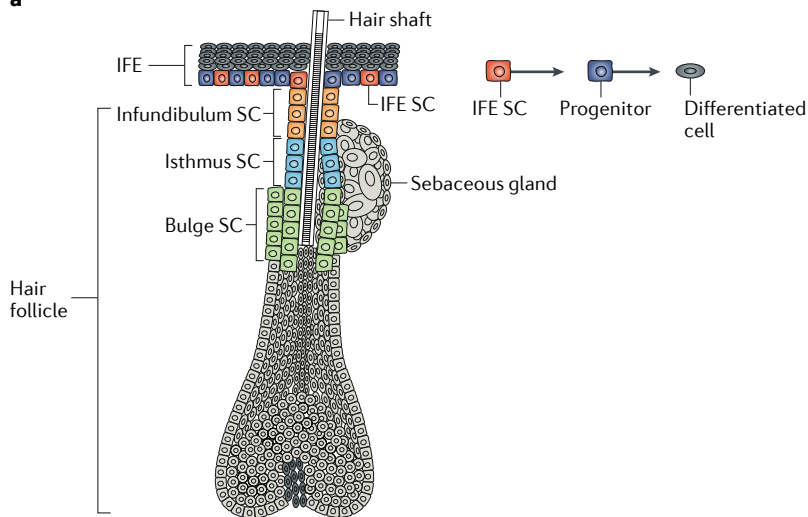
## Secretory cells

Cells of the airway system (also known as Clara cells) that produce mucins and antimicrobial peptides.

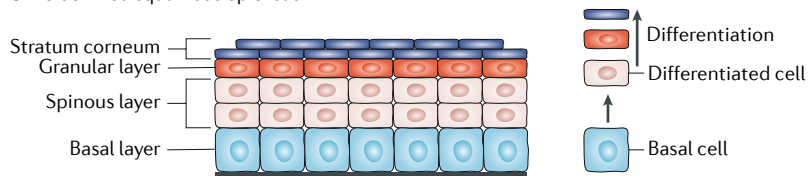
## Ciliated cells

Cells that contain tiny hair-like structures on their surface called cilia. Ciliated cells of the airway system propel debris and dirty mucus out of the respiratory tract through the movement of their cilia.

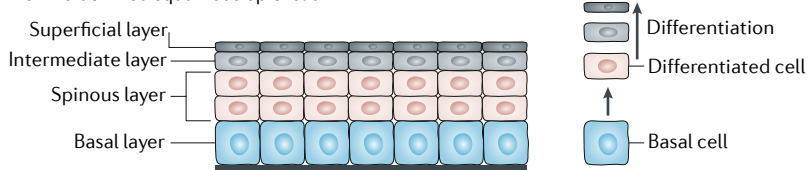
**a**



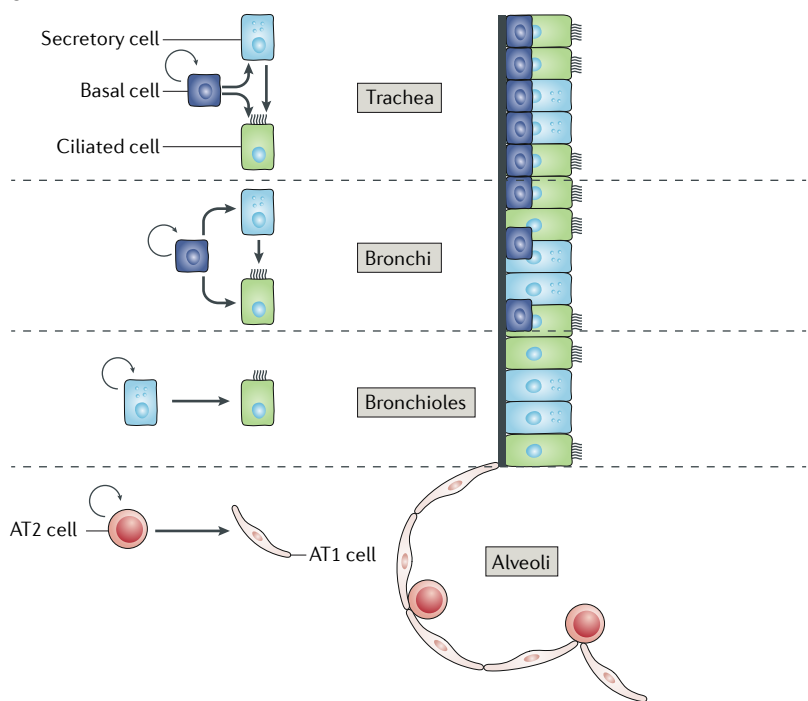
**b** Keratinized squamous epithelia



## Non-keratinized squamous epithelia



**C**



**Fig. 2 | Architecture and cellular hierarchy present in the tissues from which SCC arise. a |** The different skin compartments are maintained by their own resident stem cells (SCs). The epidermis is composed of the interfollicular epidermis (IFE), hair follicles and sebaceous glands. The different anatomical regions that form the hair follicle, namely, bulge, infundibulum, isthmus and sebaceous glands, have their own pool of SCs. The hair follicle SCs are slow-cycling cells, residing below the sebaceous gland, in the permanent region of hair follicles. During physiological conditions, hair follicle SCs sustain the cyclic production of the hair, giving rise to transit-amplifying progenitors that rapidly divide and differentiate into the different concentric hair follicles lineages. **b |** The squamous epithelia of the skin, oral cavity, head and neck and oesophagus are composed of a layer of basal proliferative cells and several suprabasal layers of differentiated cells that progressively flatten before being lost. In keratinized squamous epithelium (for example, oesophageal epithelium), the differentiated cells are enucleated and shed from the surface; these amorphous keratinized ghost cells are called squames. The inner surface of the body is lined with non-keratinized stratified squamous epithelium (for example, oral epithelium), which is characterized by superficial cells that are flattened and nucleated. **c |** The different lung compartments are maintained by their own pool of SCs during homeostasis. Multipotent basal SCs maintain the mouse trachea and bronchi and give rise to secretory and ciliated cells. In the bronchioles, secretory cells represent a bipotent population of SCs that self-renew and give rise to ciliated cells. In the alveoli, bipotent type 2 (AT2) SCs self-renew and give rise to type 1 (AT1) and AT2 cells.

The airway epithelium has low renewal activity under steady-state conditions. In the mouse trachea, lineage tracing experiments using K5–Cre–ER, which targets basal cells of the trachea, showed that these cells contain self-renewing multipotent stem cells that give rise to basal, secretory and ciliated cells during postnatal growth, homeostasis and upon injury<sup>43</sup>. Lineage tracing in uteroglobin (*Scgb1a1*)–Cre–ER transgenic mice, which drives the inducible Cre in secretory cells in the trachea, bronchi and bronchioles and in cells of the alveolar epithelium, showed that *Scgb1a1*<sup>+</sup> cells are progressively lost and replaced over time, suggesting that secretory cells in the trachea and bronchi represent a transit-amplifying cell population. However, in the bronchioles, *Scgb1a1*<sup>+</sup> cells self-renew for longer periods of time without being lost and generate ciliated cells, thus representing a population of bipotent stem cells<sup>44</sup>. Lineage tracing in forkhead box J1 (*Foxj1*)–Cre–ER transgenic mice, a system that drives Cre-inducible reporter gene expression in ciliated cells, showed that ciliated cells are terminally differentiated cells<sup>45</sup> that usually arise from secretory cells but upon injuries can arise from the direct differentiation of basal cells<sup>50</sup> (FIG. 2c).

The alveolar epithelium contains two cell types: thin type 1 cells (AT1 cells) and cuboidal type 2 cells (AT2 cells). Lineage tracing experiments using surfactant associated protein C (*Sftpc*)–Cre–ER transgenic mice, a system that drives Cre-inducible reporter gene expression in AT2 cells, demonstrated that AT2 cells can self-renew for long periods of time and give rise to AT1 cells, suggesting that they represent a bipotent population of alveolar stem cells<sup>46,47</sup> (FIG. 2c).



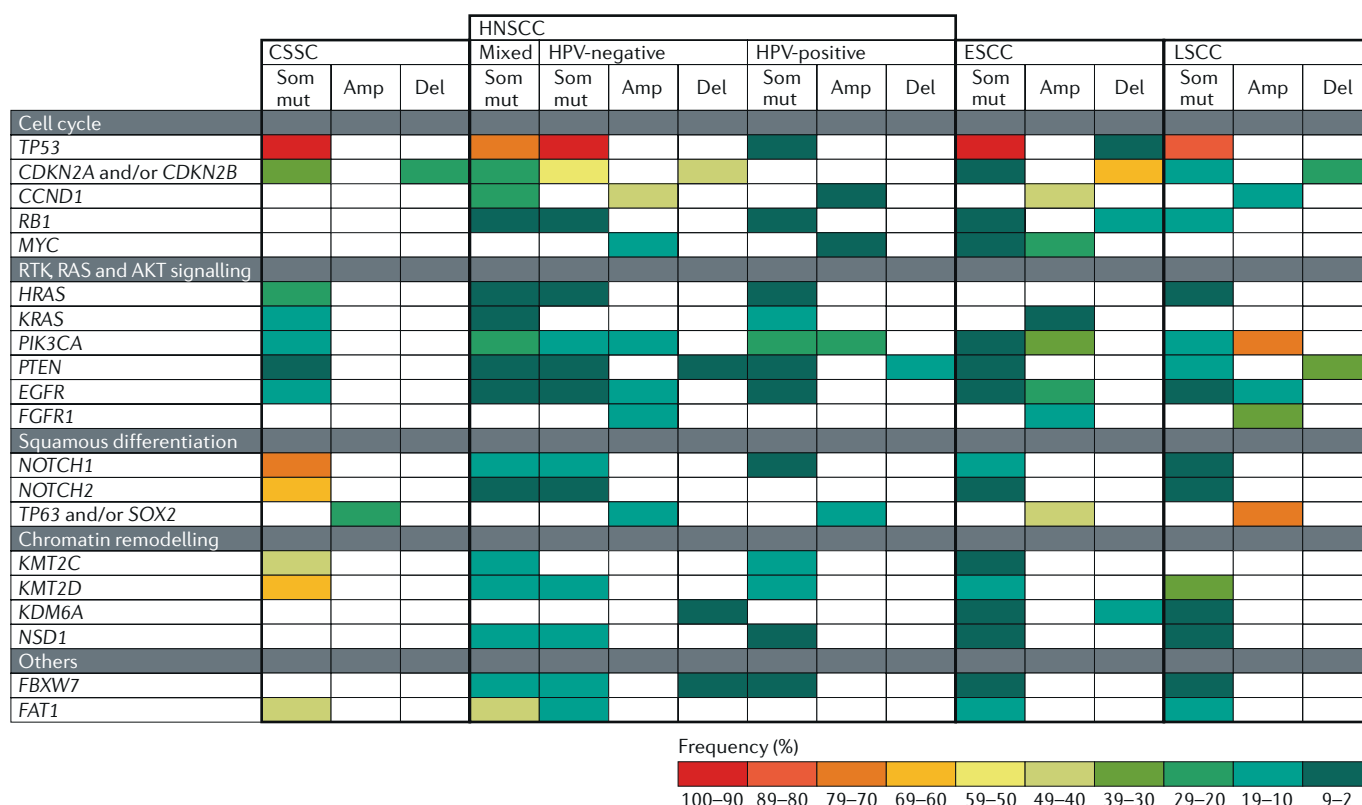


Fig. 3 | **Common genetic alterations found in the different types of SCC.** Squamous cell carcinomas (SCCs) from different body locations (cutaneous SCC (CSCC)<sup>52-54</sup>, oesophageal SCC (ESCC)<sup>55-58</sup>, head and neck SCC (HNSCC)<sup>59-64</sup> and lung SCC (LSCC)<sup>65-67</sup>) have somatic mutations (Som mut), amplifications (Amp) and deletions (Del) in genes controlling the cell cycle, the receptor tyrosine kinase (RTK), RAS and AKT signalling pathways, squamous differentiation and chromatin remodelling. The colour code represents the frequency of a given alteration among patients with each disease subtype. The white fields indicate that Del, Amp or Som mut have not been described for a given gene and SCC type. *CCND1*, cyclin D1; *CDKN2*, cyclin-dependent kinase inhibitor 2; *EGFR*, epidermal growth factor receptor; *FAT1*, FAT atypical cadherin 1; *FBXW7*, F-box and WD repeat domain-containing 7; *FGFR1*, fibroblast growth factor receptor 1; HPV, human papilloma virus; *KDM6A*, lysine demethylase 6A; *KMT2C*, lysine methyltransferase 2C; *PIK3CA*, phosphatidylinositol-4,5-bisphosphate 3-kinase catalytic subunit alpha; *NSD1*, nuclear receptor-binding SET domain protein 1.

### Common pathways in SCCs

SCCs are thought to result from a multistep process in which the sequential accumulation of genetic mutations leads to the generation of preneoplastic lesions that progress into invasive carcinomas<sup>2-5</sup>. The development of next-generation sequencing enabled the identification of new driver mutations responsible for tumour initiation and progression<sup>51</sup>. Recent studies have reported the mutational landscape of human SCCs, including cutaneous SCC (CSCC)<sup>52-54</sup>, oesophageal SCC (ESCC)<sup>55-58</sup>, head and neck SCC (HNSCC)<sup>59-64</sup>, lung SCC (LSCC)<sup>65-67</sup> and cervical SCC<sup>68,69</sup>. These studies demonstrated that SCCs from different tissues present mutations in a common set of genes, suggesting that common mechanisms regulate SCC initiation across different tissues (FIG. 3).

**Cell cycle regulators.** The tumour suppressor gene *TP53*, which induces cell cycle arrest and apoptosis<sup>70</sup>, is the most commonly mutated gene in SCCs originating from the different body locations (FIG. 3). Deletions and somatic mutations in cyclin-dependent kinase inhibitor 2A (*CDKN2A*), *CDKN2B* and *RB1* are also frequent in the different types of SCCs. *CDKN2A* and *CDKN2B* encode

p16-INK4A and p15-INK4B, respectively, which both control cell cycle arrest and activate the tumour suppressor genes *TP53* and *RB1*. *RB1* regulates G1 to S phase progression<sup>71</sup>. Moreover, amplifications of the cyclin D1 (*CCND1*) and *MYC* genes are frequently found in HNSCCs<sup>59-64</sup> and ESCCs<sup>55-58</sup> (FIG. 3). *CCND1* binds to cyclin-dependent kinase 4 (CDK4) as well as CDK6 and promotes G1 to S phase progression by inhibiting *RB*<sup>72</sup>. *MYC* overexpression promotes cell cycle progression and contributes to cell transformation<sup>73</sup>.

### RAS, AKT and receptor tyrosine kinase signalling.

Alterations in components of the RAS, AKT and receptor tyrosine kinase (RTK) signalling pathways, which regulate cell proliferation and survival<sup>74-76</sup>, are commonly found in SCCs (FIG. 3). *HRAS* was the first discovered oncogene associated with mouse and human CSCC<sup>77,78</sup>. Mutations in both *HRAS* and *KRAS* are frequently found in CSCC<sup>52-54</sup> and to a lesser extent in HNSCC<sup>59-64</sup> and LSCC<sup>65-67</sup> (FIG. 3). Activation of the AKT pathway via phosphatidylinositol-4,5-bisphosphate 3-kinase catalytic subunit alpha (*PIK3CA*) gene mutation or amplification or *PTEN* gene mutation or deletion is found in SCCs

#### Type 1 cells

(AT1 cells). Cells of the alveolar epithelium that enable gas exchange.

#### Type 2 cells

(AT2 cells). Cells of the alveolar epithelium that produce surfactant, which helps the alveolar structure to stay open and thus enables gas exchange.

from different body locations. HNSCCs<sup>59–64</sup>, ESCCs<sup>55–58</sup> and LSCCs<sup>65–67</sup> have amplifications in epidermal growth factor receptor (*EGFR*) and fibroblast growth factor receptor 1 (*FGFR1*) (FIG. 3).

**Squamous cell differentiation pathways.** The Notch signalling pathway is involved in regulating cell fate decisions in various tissues during development and homeostasis including skin, oral, oesophageal and bronchial epithelia<sup>79,80</sup>. Four Notch receptors (NOTCH1–NOTCH4) exist in mammals. NOTCH1 is expressed in the skin in homeostatic conditions, predominantly in the suprabasal layers of the IFE, where it promotes keratinocyte differentiation and acts as a tumour suppressor<sup>81–83</sup>. Deletion of *Notch1* in mouse epidermis accelerates and increases skin tumorigenesis<sup>81</sup>. Mutations in *NOTCH1* and *NOTCH2* genes are found in around half of human CSCCs<sup>52–54</sup> and to a lesser extent in HNSCCs<sup>59–64</sup>, ESCCs<sup>55–58</sup> and LSCCs<sup>65–67</sup> (FIG. 3).

Tumour protein p63 (*TP63*) and SOX2 are frequently co-amplified in SCCs owing to their adjacent chromosomal localization (3q)<sup>84</sup> (FIG. 3). *TP63* is a member of the *TP53* gene family and is expressed in the basal compartment of the skin, oesophagus, lung airways and larynx during development and homeostasis<sup>85,86</sup>. In skin, *TP63* is required for epidermal stratification during development and to maintain the proliferative potential of basal keratinocytes during homeostasis<sup>87</sup>. A reciprocal negative regulation of *TP63* expression and Notch activity has been described in the skin, where *TP63* expressed by basal cells represses Notch activity, controlling the switch between proliferation and differentiation<sup>88</sup>. SOX2 is a transcription factor that controls pluripotency in embryonic stem cells, where it acts together with octamer-binding protein 4 (OCT4; also known as POU5F1)<sup>84</sup>. By contrast, in LSCC and ESCC, SOX2 acts together with *TP63* to regulate the expression of genes involved in squamous carcinogenesis<sup>84</sup>.

SOX2 gene expression is upregulated in the majority of mouse and human CSCCs<sup>89,90</sup> (FIG. 3). Deletion of *Sox2* before chemical-induced carcinogenesis (DMBA followed by 12-*O*-tetradecanoylphorbol-13-acetate (TPA) application) prevents CSCC formation, showing the essential role of SOX2 during CSCC initiation<sup>89</sup>. Moreover, SOX2-expressing CSCC cells showed higher clonogenic potential upon subcutaneous injection into immunodeficient mice. *Sox2* genetic lineage ablation, which enables the selective killing of *Sox2*-expressing cells in mice with CSCC, leads to tumour regression, consistent with the notion that SOX2 marks skin cancer stem cells<sup>89</sup>. Deletion of *Sox2* impairs tumour propagation and induces CSCC regression<sup>89</sup>. Altogether, these studies demonstrated that SOX2 is essential for skin tumour initiation and progression and that it marks and regulates the function of cutaneous cancer stem cells, suggesting the presence of a continuum between tumour initiation and progression in skin SCCs<sup>89</sup>.

**Epigenetic regulators.** Mutations in chromatin-modifying enzymes leading to DNA and histone modifications have been described in numerous cancers<sup>91</sup>. Loss-of-function mutations in the histone 3 lysine 4 (H3K4) methyltransferases lysine methyltransferase 2C

(*KMT2C*) and *KMT2D* have been described in the different types of SCCs<sup>52,55,57–59,61–63,65,66</sup>. In aggressive CSCC, *KMT2C* mutations are associated with poor outcome and increased bone invasion<sup>92</sup>, suggesting that *KMT2C* functions as a tumour suppressor gene. Additionally, HNSCCs<sup>59–64</sup>, ESCCs<sup>55–58</sup> and LSCCs<sup>65–67,94</sup> carry loss-of-function mutations for nuclear receptor-binding SET domain protein 1 (*NSD1*), an H3K36 methyltransferase. Individuals carrying inactivating mutations in *NSD1* often have overgrowth syndromes (Soto syndrome) and are more prone to cancer, including SCC<sup>92</sup>. Moreover, human HPV-negative HNSCC with *NSD1*-inactivating mutations showed decreased expression of genes involved in epithelial differentiation, indicating that *NSD1* may act as a tumour suppressor by promoting differentiation<sup>93</sup>. Histone demethylase (such as lysine demethylase 6A (*KDM6A*))-inactivating mutations or deletions have been reported in HNSCC<sup>59–64</sup>, ESCC<sup>55–58</sup> and LSCC<sup>65–67,94</sup> (FIG. 3). However, the mechanisms by which mutations in these epigenetic regulators promote tumour initiation and progression remain poorly understood<sup>95</sup>.

### Cell of origin in SCCs

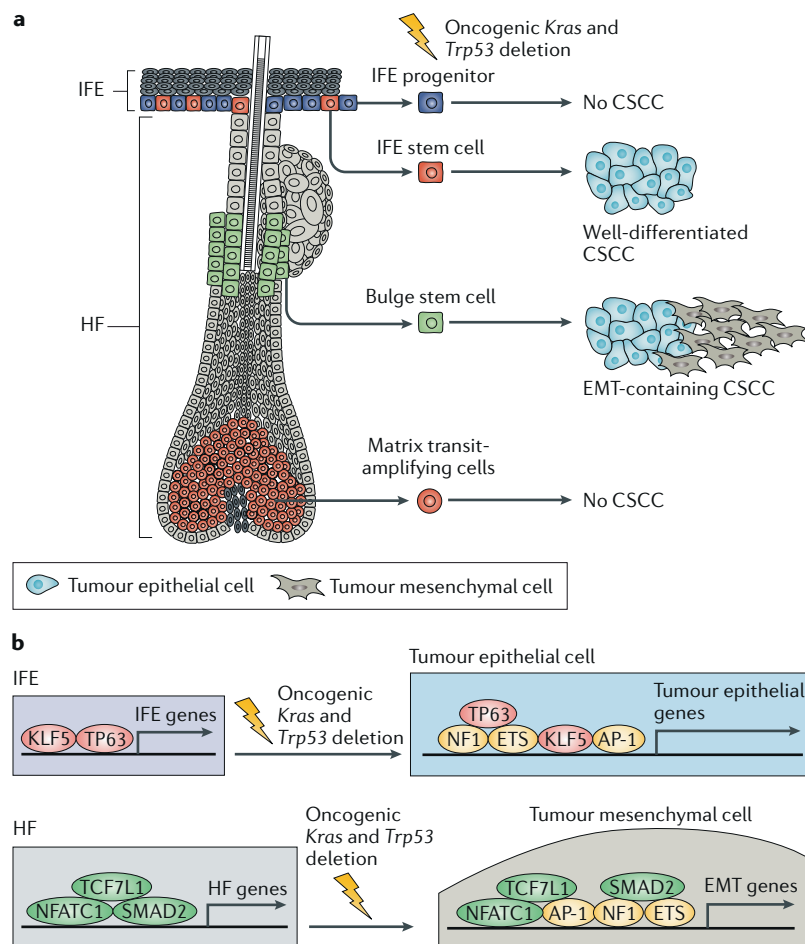
The activation of oncogenes or deletion of tumour suppressor genes in specific cell populations using Cre expressed under different promoters has enabled the identification of the cells of origin of the different SCCs. Before the development of lineage tracing techniques, it was often believed that the tumour cells and the cells of origin expressed the same markers and therefore that the cells of origin could be inferred by the marker expression in tumour cells. However, lineage tracing studies have demonstrated that the expression of differentiation markers by tumour cells is sometimes misleading when used to extrapolate or determine their cellular origin (that is, basal cell carcinoma originating from the IFE expresses markers of hair follicle)<sup>31,96,97</sup>.

**Cutaneous SCC.** CSCC is one of the most common cancers in humans, accounting for over 700,000 new patients per year in the United States<sup>98</sup>. CSCCs rarely metastasize (5%), but metastasis is associated with a poor prognosis, with a patient survival of 10–20% over 10 years<sup>2</sup>. Sun exposure, chronic wounds and immunosuppression are the major risk factors of CSCC. CSCC also occurs in patients receiving BRAF inhibitors for the treatment of melanoma<sup>99</sup>.

Actinic keratosis (human) and papilloma (mouse) represent benign squamous lesions that progress into malignant CSCCs. The most extensively used mouse model for CSCC is a carcinogen-induced protocol consisting of a topical application of DMBA, a mutagen, followed by administration of TPA, which stimulates epidermal proliferation and inflammation<sup>100</sup>. TPA administration one year after the last DMBA application induced papilloma formation<sup>101,102</sup>, suggesting that DMBA-induced mutations occur in long-term epidermal stem cells or that DMBA-induced mutations immortalize a fraction of progenitors and confer them with stem cell properties. DMBA treatment followed by repeated dermo-abrasion, which removes IFE cells, leads to papilloma and carcinoma formation, although it does

### Lineage ablation

The selective killing of a cell lineage, which is usually performed by inducing expression of a toxin or a toxin receptor in a cell of interest and then administering that toxin.



**Fig. 4 | The cells at the origin of CSCC.** **a** | Activation of oncogenic *Kras* and deletion of *Trp53* in interfollicular epidermis (IFE) and hair follicle (HF) stem cells lead to cutaneous squamous cell carcinoma (CSCC) formation, whereas these gene alterations in IFE progenitors or matrix transit-amplifying cells do not lead to CSCC formation. Oncogenic activation of *Kras* and deletion of *Trp53* in IFE stem cells lead to the generation of well-differentiated CSCCs, whereas activation of the same oncogenic hits in HF stem cells leads to the generation of CSCCs with epithelial to mesenchymal transition (EMT) features. **b** | The transcriptional and epigenetic landscape of the cell of origin influences tumour differentiation. Upon oncogenic *Kras* expression and *Trp53* deletion, a core of transcription factors (including members of the activator protein 1 (AP-1), E26 transformation-specific (ETS) and nuclear factor 1 (NF1) families) promote tumour gene expression independently of the cell of origin. In addition to this core of transcription factors, lineage-specific transcription factors controlled by the cells of origin of CSCCs influence the specific differentiation of the tumours. Tumour protein 63 (TP63) and Krüppel-like factor 5 (KLF5) promote the expression of IFE genes and the development of well-differentiated squamous cell carcinomas (SCCs), whereas SMAD family member 2 (SMAD2), nuclear factor of activated T cell, cytoplasmic 1 (NFATC1) and transcription factor 7-like 1 (TCF7L1) promote the expression of HF genes and the development of SCCs in which EMT occurs.

occur with reduced frequency<sup>103</sup>, suggesting that different epidermal lineages, including hair follicles and IFE, act as the cells of origin in CSCC. In addition, hair follicle stem cell lineage tracing demonstrates the direct contribution of hair follicle stem cells to DMBA-TPA-induced benign skin tumours<sup>104,105</sup>.

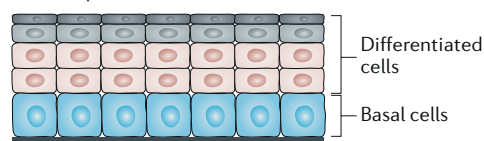
DMBA-TPA-induced CSCC is almost invariably (>90%) associated with mutations in RAS family members, most frequently *Hras*, followed by *Kras* and *Ras2* (REFS<sup>77,106–108</sup>). Overexpression of *Hras* in differentiated

epidermal cells using the *K10* promoter leads to the generation of papilloma only at sites of wounding or irritation<sup>109</sup>, suggesting that either differentiated cells revert back to a stem-like state during wound healing or that wounding represents the second hit in *K10*<sup>+</sup> cells already carrying and expressing the *Hras* mutant allele. In addition, *Hras* mutant allele expression in basal cells, using a truncated form of the *K5* promoter results in papilloma and CSCC formation in mice<sup>110</sup>, indicating that CSCC originates from basal cells in the absence of wounding.

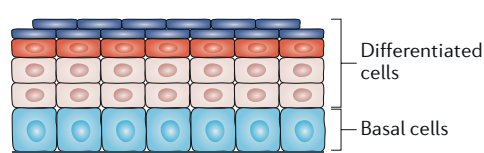
The classical transgenic approach described before, in which the *K5* or *K14* promoter is used to express an oncogene, leads to the constitutive expression (non-inducible) of the oncogene in all basal cells from the early stages of epidermal development to adulthood<sup>110</sup>. Therefore, this strategy cannot be used to determine from which parts of the epidermis tumours arise. To assess from which adult epidermal compartments CSCCs arise, different groups have used Cre-ER or Cre-PR transgenic mice to conditionally express oncogenic *Kras*<sup>G12D</sup> in different epidermal compartments at physiological levels in mice (FIG. 4a). Papilloma was observed following activation of *Kras*<sup>G12D</sup> expression in *K19*<sup>+</sup> or *K15*<sup>+</sup> hair follicle stem cells and their progeny (using *K19*-Cre-ER and *K15*-Cre-PR transgenic mice)<sup>96,97</sup>. By contrast, activation of the same oncogenes in the rapidly dividing hair follicle transit-amplifying cells using a Cre-inducible sonic hedgehog (*Shh*) promoter-driven system (*Shh*-Cre-ER) did not lead to benign or malignant tumour formation<sup>96,97</sup>, suggesting that tumours arise from long-lived hair follicle progenitors and/or stem cells rather than transit-amplifying cells (FIG. 4a). Expression of *Kras*<sup>G12D</sup> in *K14*<sup>+</sup> basal cells or *IVL*<sup>+</sup> progenitors using *K14*-Cre-ER or *IVL*-Cre-ER transgenic mice leads to papilloma formation<sup>96</sup>. Combined *Kras*<sup>G12D</sup> expression and *Trp53* deletion in mice are required to initiate malignant SCCs<sup>96,97</sup>. Interestingly, whereas *K14*-Cre-ER-targeted IFE basal cells can give rise to SCC upon *Kras*<sup>G12D</sup> expression and *Trp53* deletion, *IVL*-Cre-ER IFE progenitors cannot (C.B., unpublished observations). Altogether, these studies indicate that hair follicle and IFE stem cells represent the cells of origin of mouse CSCCs (FIG. 4a).


Human CSCCs present a high degree of cellular heterogeneity, varying from well-differentiated to poorly differentiated tumours, which present a higher rate of recurrence and lower rate of cure after treatment<sup>2</sup>. To determine whether the cells of origin control tumour heterogeneity in CSCCs, intertumoural and intratumoural heterogeneity was assessed in SCCs arising from the same oncogenic hits in different cell lineages of the mouse epidermis<sup>111</sup>. Whereas conditional oncogenic *Kras*<sup>G12D</sup> expression and *Trp53* deletion specifically in IFE basal cells, using *K14*-Cre-ER, lead to well-differentiated tumours in mice, activation of the same oncogenic hits in hair follicle lineages using *Lgr5*-Cre-ER leads to more invasive and less differentiated tumours with features of epithelial to mesenchymal transition (EMT) or purely mesenchymal-like tumours resembling spindle cell carcinoma<sup>111</sup> (FIG. 4). These data demonstrate that oncogene-targeted hair follicle cells are primed to undergo EMT during tumorigenesis.

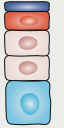

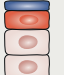
## a Oral epithelium



## b Oesophageal epithelium



Cell type	Genetic alteration	Outcome
 Basal cell	<i>Kras</i> <sup>G12D</sup>	Papilloma and/or hyperplasia
	<i>Kras</i> <sup>G12D</sup> + <i>Trp53</i> KO	HNSCC
	<i>Smad4</i> KO	HNSCC
	<i>Pten</i> KO + <i>Tgfbr1</i> KO	HNSCC

Cell type	Genetic alteration	Outcome
 Basal and differentiated cells	<i>Ccnd1</i>	Dysplasia
	<i>Ccnd1</i> + <i>Trp53</i> KO	ESCC
	<i>Ctnnd1</i> KO	ESCC
 Basal cell	<i>Sox2</i>	Hyperplasia
	<i>Stat3</i> + <i>Sox2</i>	ESCC
 Differentiated cells	<i>Stat3</i> + <i>Sox2</i>	No tumour

**Fig. 5 | The cells of origin in HNSCC and ESCC. a** | The cells at the origin of head and neck squamous cell carcinoma (HNSCC) are shown. Basal cells of the oral epithelia can give rise to hyperplasia and/or papilloma formation upon oncogenic *Kras* activation. HNSCC can result from the activation of *Kras*; the combination of activation of *Kras* and deletion of *Trp53*; SMAD family member 4 (*Smad4*) deletion; or double deletion of *Pten* and transforming growth factor-beta receptor type 1 (*Tgfbr1*) in basal cells. **b** | The cells at the origin of oesophageal squamous cell carcinoma (ESCC) are shown. Activation of cyclin D1 (*Ccnd1*) in combination with *Trp53* deletion and deletion of catenin delta 1 (*Ctnnd1*) in oesophageal epithelial cells leads to ESCC formation. Expression of signal transducer and activator of transcription 3 (*Stat3*) and SRY-box 2 (*Sox2*) in basal cells but not in suprabasal cells promotes ESCC. KO, knockout.

Cancer cells derived from hair follicle lineages that underwent EMT have much higher clonogenic and metastatic potential, suggesting that the cells of origin in CSCC influence tumour stemness, local invasion and lung metastasis. The transcriptional and chromatin landscape of the cells of origin and the presence of different populations of tumour cells revealed that the different epidermal stem cells are epigenetically primed to undergo different differentiation programmes upon oncogenic transformation, giving rise to tumours with different degrees of squamous differentiation and EMT<sup>111</sup> (FIG. 4b). *Trp63* overexpression restricts EMT in oncogene-targeted hair follicle cells, leading to the formation of well-differentiated SCC, and this finding indicates that *Trp63* is a key regulator of epithelial fate. Altogether, this study demonstrates the role of the cell lineages (hair follicle cells versus IFE cells) at the origin of CSCC in regulating EMT and identifies gene regulatory networks that promote squamous differentiation and EMT in primary skin SCCs<sup>111</sup>.

**Head and neck SCC.** HNSCCs are the sixth most common cancer worldwide<sup>112</sup> and are associated with high mortality — approximately 50% of patients die of the disease. Smoking and alcohol consumption are the major risk factors in developing countries, and infection with HPV is a risk factor for HNSCC among non-smokers<sup>4</sup>. HPV serotype 16 is associated with increased risk of developing oropharyngeal SCC<sup>113</sup> and

cervical cancer<sup>114</sup>. Fanconi anaemia, a rare autosomal recessive disorder characterized by a high degree of genomic instability, predisposes to HNSCC<sup>115</sup>.

Oral leukoplakia is described to be the precursor lesion of HNSCC in humans<sup>116</sup>. Several chemical HNSCC carcinogen models have been developed in rodents, including DMBA-based and 4-nitroquinoline 1-oxide (4-NQO)-based methods, which recapitulate some features of human oral SCC (OSCC), including the progression of pre-malignant lesions to differentiated SCCs<sup>117</sup>. A combination of *K14*–Cre–ER lineage tracing with 4-NQO treatment in mice leads to the generation of papilloma and OSCC, providing evidence that basal cells represent the cells of origin in OSCC<sup>118</sup>.

*RAS* and *TP53* genes are mutated in HNSCC<sup>59–64</sup> (FIG. 3). The Cre-inducible expression of tumorigenic *Kras*<sup>G12D</sup> driven by the *K14* or *K5* promoter in basal cells of the oral mucosa consistently leads to the generation of papillomas in mouse oral mucosa and to hyperplasia of the tongue<sup>119,120</sup>. Combined *Kras*<sup>G12D</sup> activation and *Trp53* deletion in mouse oral basal cells using the *K14*–Cre–ER system resulted in the generation of tongue SCC<sup>121</sup> (FIG. 5a).

Mutations in the transforming growth factor- $\beta$  (TGF $\beta$ ) and PTEN–AKT signalling pathways are frequently found in HNSCC<sup>59</sup>. Loss of function of SMAD family member 4 (*Smad4*) in mouse oral basal cells, using *K14*–Cre–PR and *K15*–Cre–PR, leads to the generation of tumours ranging from moderately differentiated



to poorly differentiated SCC with RAS activation and genomic instability<sup>122</sup>. Deletion of *Pten* or TGF- $\beta$  receptor type 1 (*Tgfr1*) alone in basal cells using *K14-Cre-ER* resulted in hyperproliferation and very few instances of HNSCC, whereas the combined deletion of *Pten* and *Tgfr1* in the same cells using *K14-Cre-ER* led to the formation of HNSCC<sup>123</sup> (FIG. 5a). Altogether, these reports demonstrate that HNSCC can originate from oral basal cells.

**Oesophageal SCC.** Oesophageal cancer is the eighth most common cancer and the sixth leading cause of cancer death worldwide<sup>112</sup>. Oesophageal cancer includes two major histological subtypes: ESCC and oesophageal adenocarcinoma<sup>5</sup>. ESCC accounts for the majority (around 90%) of the cases of oesophageal carcinomas and is particularly common in certain regions of Asia. ESCC predominates in the upper and mid-oesophagus and is associated with smoking and alcohol exposure in Western countries. Adenocarcinoma generally occurs in the lower oesophagus near the gastric junction and is associated with gastric reflux and obesity<sup>5</sup>.

Several studies using the Epstein–Barr virus *ED-L2* promoter, which is expressed in both basal and suprabasal compartments of the oral-oesophageal squamous epithelia, identified the combination of genetic alterations that lead to ESCC development in mice<sup>124–127</sup> (FIG. 5b). *TP53* loss of function and *CCND1* amplification represent the most frequent genetic alterations in ESCC<sup>58</sup>. Overexpression of *Ccnd1* in mouse oesophageal squamous epithelia using the *ED-L2* promoter leads to dysplasia, the precursor lesion of ESCC<sup>124</sup>. The combined overexpression of *Ccnd1* and deletion of *Trp53* driven by the *ED-L2* promoter resulted in invasive oral-oesophageal cancer, leading to lymph node metastasis in 25% of mice with ESCC<sup>125</sup> (FIG. 5b).

Inflammation was suggested to play an important role in ESCC carcinogenesis by fostering a microenvironment favourable for tumour initiation. Krüppel-like factor 4 (*Klf4*) overexpression in the oesophageal epithelia using the *ED-L2* promoter leads to the production of pro-inflammatory cytokines (tumour necrosis factor (TNF), CXC-chemokine ligand 5 (CXCL5), granulocyte colony-stimulating factor (G-CSF) and interleukin-1 $\alpha$  (IL-1 $\alpha$ )) by the oesophageal basal cells, resulting in the recruitment of inflammatory cells and SCC formation in mice<sup>126</sup>. Deletion of catenin delta-1 (*Ctnd1*) in the tongue, oesophagus and forestomach using *ED-L2-Cre* mice led to immune cell infiltration, increased proliferation of basal cell, defects in differentiation and generation of ESCC<sup>127</sup>.

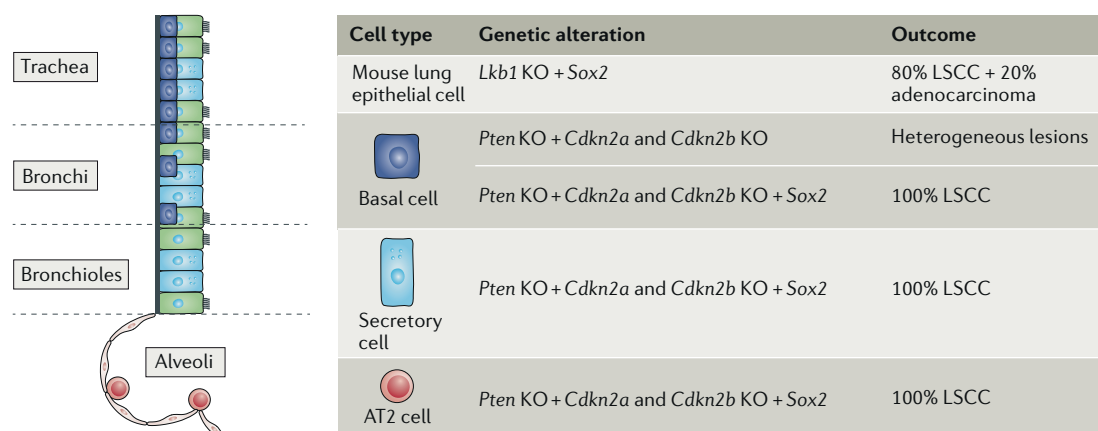
Lineage tracing experiments in a chemical-induced mouse model of oesophageal cancer, consisting of diethylnitrosamine (DEN) and sorafenib application, revealed that high-grade dysplasias resulted from a small bias towards symmetrically renewing division over asymmetrical division or symmetrical differentiation in oesophageal progenitors<sup>128</sup>. In invasive murine SCCs, which were induced by DEN treatment followed by *Kras*<sup>G12D</sup> expression in oesophageal cells of *Ah-Cre-ER* mice and following sorafenib application, the

tumour expansion was driven by a larger bias towards self-renewing division in basal tumour cells<sup>128</sup>, suggesting that unbalanced cell fate is associated with ESCC development.

Genes controlling squamous cell differentiation, such as genes of the Notch family or SOX2, are frequently altered in human ESCC<sup>55–58</sup> (FIG. 3). Inactivation of the Notch signalling pathway in the oesophageal epithelium (using a dominant negative mutant of mastermind-like transcriptional coactivator 1 (*Maml1*) expressed in oesophageal cells of *Ah-Cre-ER* mice) in mice resulted in the replacement of wild-type epithelium by mutant cells, but this was not sufficient to promote dysplasia or ESCC formation, suggesting that Notch pathway inhibition is not sufficient to initiate ESCC carcinogenesis<sup>129</sup>. SOX2 is amplified in human LSCCs and ESCCs<sup>130</sup>. *Sox2* overexpression in murine oesophageal K5<sup>+</sup> basal cells and their progeny (using *K5-Cre-ER*) leads to the expansion of the basal compartment, defects in squamous differentiation and hyperplasia<sup>131</sup>. When these *Sox2*-overexpressing cells are infected with lentivirus expressing constitutively activated signal transducer and activator of transcription 3 (STAT3), they give rise to SCC upon transplantation into immunodeficient mice. However, differentiated suprabasal cells co-expressing *Sox2* and *Stat3* did not lead to SCC upon transplantation. These findings demonstrate that activated STAT3 and SOX2 overexpression in murine oesophageal basal progenitors, but not differentiated suprabasal cells, leads to ESCC formation, indicating that oesophageal progenitors and/or stem cells represent the cells of origin in ESCC<sup>131</sup> (FIG. 5b). Moreover, this study suggested that SOX2 overexpression represents a tumour-initiating event in ESCC and that cooperation with inflammation-mediated STAT3 activation is required for SOX2-driven ESCC tumorigenesis. Altogether, these reports suggest that ESCC originates from oesophageal progenitors and/or stem cells and that cell fate imbalance in the cells of origin is an important feature of tumour initiation.

**Lung SCC.** Lung cancer is one of the leading causes of cancer-related mortality, resulting in an estimated 1.4 million deaths per year worldwide<sup>132</sup>. Non-small-cell lung carcinoma and small-cell lung carcinoma are the two most frequent lung cancers. Non-small-cell lung carcinomas account for more than 85% of lung cancer cases and are classified into lung adenocarcinomas (50%), LSCCs (30–40%) and large cell carcinomas. Adenocarcinomas and SCCs present distinct molecular abnormalities<sup>65,133,134</sup> and are thought to arise from distinct cells of origin<sup>135</sup>. Adenocarcinomas and large cell carcinomas usually arise peripherally (from the small bronchi, bronchioles or alveoli), and LSCCs usually arise proximally (from the main bronchi)<sup>3</sup>. Smoking and chronic inflammation are the major risk factors of LSCCs<sup>135</sup>.

The combination of *Kras*<sup>G12D</sup> expression and serine/threonine kinase 11 (*Lkb1*; also known as *Stk11*) deletion in the mouse lung epithelium using inoculation of adenovirus-derived Cre intranasally leads to the generation of a large spectrum of lung tumour types, including LSCC<sup>136</sup>. Combined *Pten* and *Lkb1* deletion in lung



**Fig. 6 | SOX2 promotes LSCC differentiation irrespective of the cell of origin.** Transcription factor SRY-box2 (SOX2) promotes squamous cell fate in lung tumours regardless of the cell of origin. *Sox2* overexpression and serine/threonine kinase 11 (*Lkb1*) deletion in cells of the lung epithelium leads to lung squamous cell carcinoma (LSCC) and adenocarcinoma. In the absence of *Sox2* overexpression, *Pten* and cyclin-dependent kinase inhibitor 2A (*Cdkn2a*) and/or *Cdkn2b* deletion in basal cells leads to heterogeneous lesions, including adenocarcinoma and LSCCs. *Sox2* overexpression and *Pten* and *Cdkn2a* and/or *Cdkn2b* deletion in basal, secretory or type 2 (AT2) cells lead to the formation of LSCCs. KO, knockout.

epithelia leads to the formation of highly penetrant, well-differentiated, rarely metastatic LSCCs, which appeared in both proximal and distal murine lungs, suggesting that different cell lineages are at the origin of LSCC<sup>137</sup>. SOX2 is one of the most frequently amplified genes (23%) and is highly expressed in human LSCCs<sup>130</sup>. SOX2 is expressed physiologically during the development of the airway system and in the adult trachea<sup>138</sup>. Conditional deletion of *Sox2* in the developing airway epithelium using NK2 homeobox 5 (*Nkx2-5*)–Cre mice resulted in mouse perinatal death due to defects in the airway system and lung development<sup>138</sup>, including an excess of mucus-producing cells and a decrease of basal, ciliated and secretory cells<sup>138</sup>. Deletion of *Sox2* in adult lung epithelial cells using the ubiquitously expressed cytomegalovirus-derived Cre–ER promoter leads to a decrease of their renewal potential and repair capacity during tissue injuries<sup>138</sup>. These data demonstrate the essential role of SOX2 during airway system development and maintenance in adults. Overexpression of *Sox2* combined with *Lkb1* deletion in murine lung cells, using intranasal inhalation of a lentivirus engineered to overexpress *Sox2* under the ubiquitous beta-actin (*Actb*) promoter and a lentivirus expressing Cre under the ubiquitous phosphoglycerate kinase (*Pgk*) promoter (*Pgk*–Cre), leads to the generation of LSCC<sup>139</sup> (FIG. 6). By contrast, lentivirus expression of *Sox2* in combination with *Trp53* deletion or *Trp53* and *Rb1* double deletion in mouse lung epithelium, using *Pgk*–Cre lentivirus to delete *Trp53* and *Rb1*, leads to the generation of adenocarcinomas<sup>139</sup>.

The previous studies define the combination of mutations required for LSCC development but do not define the lung lineages from which LSCCs arise. Overexpression of *Sox2* using *Scgb1a1*–Cre–ER in mice, which targets secretory cells and rare AT2 cells located in the bronchioalveolar duct junction that display stem cell properties<sup>140</sup>, leads to the metaplastic transformation of pseudostratified epithelium of the bronchioles and alveoli into columnar cells expressing TP63. Some of

these lesions progress into adenocarcinoma-like tumours but express squamous markers<sup>141</sup>. Oncogenic *Kras*<sup>G12D</sup> expression in secretory cells and rare AT2 cells using *Scgb1a1*–Cre–ER leads to the formation of alveolar adenocarcinomas, whereas the expression of *Kras*<sup>G12D</sup> combined with NOTCH inhibition by expression of the dominant negative *Maml1* mutant in the same cells resulted in *Sox2* expression and alveolar hyperplastic lesions that expressed squamous markers<sup>142</sup>, suggesting that Notch and SOX2 drive squamous differentiation in *Kras*-induced lung tumours. To gain insight into the cell of origin of LSCCs, the tumour suppressor genes (that is, *Pten* and *Cdkn2a* and *Cdkn2b*) or putative amplified oncogenes (that is, *Fgfr1* and *Sox2*) in LSCCs in different lung cell types were deleted or overexpressed<sup>143</sup> (FIG. 6). Deletion of *Pten*, *Cdkn2a* and *Cdkn2b* in mouse lung basal cells using intratracheal administration of adenovirus-expressing Cre under the *K5* promoter (adeno-*K5*–Cre) or adeno-*K14*–Cre resulted in low-penetrance tumours of mixed histology. Deletion of *Pten*, *Cdkn2a* and *Cdkn2b* in combination with *Fgfr1* overexpression in basal cells using intratracheal administration of adeno-*K5*–Cre or adeno-*K14*–Cre leads to heterogeneous tumours with sporadic squamous differentiation. By contrast, overexpression of *Sox2* and deletion of *Pten*, *Cdkn2a* and *Cdkn2b* in basal cells resulted in the generation of multiple proximal LSCCs ranging from moderately differentiated to well-differentiated SCCs, providing evidence that basal cells can represent the cells of origin in LSCCs and that *Sox2* overexpression promotes squamous differentiation. Interestingly, *Sox2* overexpression in the context of *Pten*, *Cdkn2a* and *Cdkn2b* deletion in secretory and AT2 cells (using intratracheal administration of adeno-*Scgb1a1*–Cre and adeno-surfactant protein C (*Spcc*)–Cre, respectively) leads to the formation of distal LSCCs, demonstrating that bronchus, bronchiole and alveolus cells can also act as the cells of origin of LSCC<sup>143</sup>. This study nicely illustrates that basal, secretory and AT2 cells represent different possible cells of origin for LSCCs in

mice<sup>143</sup>. Moreover, it demonstrates that *Sox2* overexpression is a key promoter of squamous cell differentiation in LSCCs, as previously reported in CSCCs<sup>89</sup>.

### Limitations of the SCC mouse models

Although some progress has been made in the characterization of the cell of origin of SCCs using murine models, many questions still need to be resolved. The cellular hierarchy present in some tissues from which SCC arises (cervical, oral cavity and head and neck tissues) is poorly characterized. The distinction between stem cells, progenitors and differentiated cells within the basal layer of these epithelia remains complicated. The generation of new specific Cre mice allowing targeting of these different populations will be essential to refine the respective contribution of stem cells versus progenitors in cancer initiation. The mechanisms that confer the competence or resistance of a given cell population to SCC initiation should be further studied to design new strategies to prevent and treat SCCs.

Moreover, caution is needed when extrapolating the results obtained in mice to the human setting, especially where histological differences exist between the two species. This is the case of the oesophageal epithelium, which is keratinized in mice but non-keratinized in humans. It has been suggested that keratinization in mouse oesophagus protects it from injuries and ESCC development. Additionally, the transition from squamous epithelia (oesophagus) to columnar epithelia (gastric cardia) occurs at the gastro-oesophageal junction (between the oesophagus and stomach) in humans, whereas in mice, it occurs within the stomach. Another important difference is observed in the lung; basal cells and cartilage rings extend from the trachea to the bronchioles in humans, whereas in mice, they are limited to the trachea and bronchi (FIG. 2).

### Conclusions and future directions

Comparisons across different SCCs illustrate that SCCs are characterized by very similar mutation landscapes, including alterations in the *TP53*, *SOX2*, *TP63*, *CDKN2A*, *CDKN2B*, *NOTCH1*, *KMT2D*, *PIK3CA* and *PTEN* genes. Comparative genomic studies have reported that LSCCs and ESCCs share more commonly mutated genes with other types of SCCs from other body locations than with adenocarcinomas originating from the same tissue<sup>56,94,134</sup>. The type and number of oncogenic mutations that occur in cells of origin determine SCC invasiveness, differentiation and EMT features. In mouse models, more than one mutation in an oncogene or a tumour suppressor gene is usually required for the

formation of invasive SCCs. *TP53* deletion is the most frequent tumour suppressor gene mutation in human and mouse SCCs, and *Trp53* deletion is usually sufficient to convert benign tumours into malignant SCCs when another oncogene (*Ras* or *Ccnd1*) is expressed in mouse models of SCC<sup>96,97,125</sup>. In addition to these key oncogenic mutations, cell fate determinants, such as *SOX2* or *TP63* overexpression, are required to promote the squamous fate of SCCs<sup>143</sup>.

The different studies that investigate the cells of origin in SCCs highlight another common feature — the cells of origin arise from mutations in proliferative basal cells that are characterized by their ability to self-renew and to generate terminally differentiated cells. No clear demonstration that oncogenic mutations can induce the reversion of non-proliferative epithelial cells to a stem cell-like state and consequently drive SCC initiation has been provided. Very often, despite their rapid turnover, transit-amplifying progeny seem unable to initiate malignant SCCs, although in some cases, committed progenitors are able to initiate benign squamous tumours. It will be interesting to study whether additional oncogenic mutations in more committed progenitors can lead to SCC formation, as described in basal cell carcinoma or intestinal tumours<sup>27,144</sup>. However, when mouse tumours arise upon experimental introduction of oncogenic mutations in stem cells, it remains unclear whether the cancer originates directly from the stem cell or from the more committed progeny.

Next-generation sequencing techniques enabled the identification of new drivers in the different types of SCC. New SCC mouse models could be generated to better model the diversity and tumour heterogeneity found in SCCs from different tissues and to better understand how the order and combination of different genetic alterations modify the cell at the origin of cancer and tumour progression. Moreover, a better understanding of the transcriptional and chromatin landscape of the different types of SCCs will uncover common and tissue-specific determinants that regulate tumour initiation and squamous differentiation programmes across different SCCs. In addition, it would be interesting to assess whether the cells of origin in SCCs can be inferred from the DNA methylation patterns of cancer cells, as suggested in CSCC<sup>145</sup>. Moreover, understanding how the cell of origin controls the generation and properties of cancer stem cells would be essential to designing new strategies to prevent tumour progression and metastasis and to decrease resistance to therapy.

Published online: 30 May 2018

- Dotto, G. P. & Rustgi, A. K. Squamous cell cancers: a unified perspective on biology and genetics. *Cancer Cell* **29**, 622–637 (2016).  
**This is a landmark review summarizing the aetiology and genetic determinants of SCCs arising from different body locations.**
- Alam, M. & Ratner, D. Cutaneous squamous-cell carcinoma. *N. Engl. J. Med.* **344**, 975–983 (2001).
- Herbst, R. S., Heymach, J. V. & Lippman, S. M. Lung cancer. *N. Engl. J. Med.* **359**, 1367–1380 (2008).
- Leemans, C. R., Braakhuis, B. J. & Brakenhoff, R. H. The molecular biology of head and neck cancer. *Nat. Rev. Cancer* **11**, 9–22 (2011).
- Rustgi, A. K. & El-Serag, H. B. Esophageal carcinoma. *N. Engl. J. Med.* **371**, 2499–2509 (2014).
- Bray, F. et al. Trends in cervical squamous cell carcinoma incidence in 13 European countries: changing risk and the effects of screening. *Cancer Epidemiol. Biomarkers Prev.* **14**, 677–686 (2005).
- Malik, R. D. et al. Squamous cell carcinoma of the prostate. *Rev. Urol.* **13**, 56–60 (2011).
- Tunio, M. A., Al Asiri, M., Fagih, M. & Akasha, R. Primary squamous cell carcinoma of thyroid: a case report and review of literature. *Head Neck Oncol.* **4**, 8 (2012).
- Ben Kridis, W. et al. Primary squamous cell carcinoma of the pancreas: a report of two cases and review of the literature. *Intern. Med.* **54**, 1357–1359 (2015).
- Martin, J. W. et al. Squamous cell carcinoma of the urinary bladder: systematic review of clinical characteristics and therapeutic approaches. *Arab. J. Urol.* **14**, 183–191 (2016).
- Blanpain, C. Tracing the cellular origin of cancer. *Nat. Cell Biol.* **15**, 126–134 (2013).
- Van Keymeulen, A. & Blanpain, C. Tracing epithelial stem cells during development, homeostasis, and repair. *J. Cell Biol.* **197**, 575–584 (2012).

13. Blanpain, C. & Fuchs, E. Stem cell plasticity. Plasticity of epithelial stem cells in tissue regeneration. *Science* **344**, 1242281 (2014).
14. Blanpain, C. & Fuchs, E. Epidermal homeostasis: a balancing act of stem cells in the skin. *Nat. Rev. Mol. Cell Biol.* **10**, 207–217 (2009).
15. Jaks, V. et al. Lgr5 marks cycling, yet long-lived, hair follicle stem cells. *Nat. Genet.* **40**, 1291–1299 (2008).
16. Jensen, K. B. et al. Lrig1 expression defines a distinct multipotent stem cell population in mammalian epidermis. *Cell Stem Cell* **4**, 427–439 (2009).
17. Horsley, V. et al. Blimp1 defines a progenitor population that governs cellular input to the sebaceous gland. *Cell* **126**, 597–609 (2006).
18. Morris, R. J. et al. Capturing and profiling adult hair follicle stem cells. *Nat. Biotechnol.* **22**, 411–417 (2004).
19. Page, M. E., Lombard, P., Ng, F., Gottgens, B. & Jensen, K. B. The epidermis comprises autonomous compartments maintained by distinct stem cell populations. *Cell Stem Cell* **13**, 471–482 (2013).
20. Levy, V., Lindon, C., Zheng, Y., Harfe, B. D. & Morgan, B. A. Epidermal stem cells arise from the hair follicle after wounding. *FASEB J.* **21**, 1358–1366 (2007).
21. Ito, M. et al. Stem cells in the hair follicle bulge contribute to wound repair but not to homeostasis of the epidermis. *Nat. Med.* **11**, 1351–1354 (2005).
22. Aragona, M. et al. Defining stem cell dynamics and migration during wound healing in mouse skin epidermis. *Nat. Commun.* **8**, 14684 (2017).
23. Rompolas, P. et al. Spatiotemporal coordination of stem cell commitment during epidermal homeostasis. *Science* **352**, 1471–1474 (2016).
24. Sada, A. et al. Defining the cellular lineage hierarchy in the interfollicular epidermis of adult skin. *Nat. Cell Biol.* **18**, 619–631 (2016).
25. Mascré, G. et al. Distinct contribution of stem and progenitor cells to epidermal maintenance. *Nature* **489**, 257–262 (2012).
26. Gomez, C. et al. The interfollicular epidermis of adult mouse tail comprises two distinct cell lineages that are differentially regulated by Wnt, Edarad, and Lrig1. *Stem Cell Rep.* **1**, 19–27 (2013).
27. Sanchez-Danes, A. et al. Defining the clonal dynamics leading to mouse skin tumour initiation. *Nature* **536**, 298–303 (2016).
28. Clayton, E. et al. A single type of progenitor cell maintains normal epidermis. *Nature* **446**, 185–189 (2007).
29. Doupe, D. P., Klein, A. M., Simons, B. D. & Jones, P. H. The ordered architecture of murine ear epidermis is maintained by progenitor cells with random fate. *Dev. Cell* **18**, 317–323 (2010).
30. Potten, C. S. Cell replacement in epidermis (keratopoiesis) via discrete units of proliferation. *Int. Rev. Cytol.* **69**, 271–318 (1981).
31. Youssef, K. K. et al. Identification of the cell lineage at the origin of basal cell carcinoma. *Nat. Cell Biol.* **12**, 299–305 (2010).
32. Hume, W. J. & Potten, C. S. The ordered columnar structure of mouse filiform papillae. *J. Cell Sci.* **22**, 149–160 (1976).
33. Arnold, K. et al. Sox2(+) adult stem and progenitor cells are important for tissue regeneration and survival of mice. *Cell Stem Cell* **9**, 317–329 (2011).
34. Okubo, T., Clark, C. & Hogan, B. L. Cell lineage mapping of taste bud cells and keratinocytes in the mouse tongue and soft palate. *Stem Cells* **27**, 442–450 (2009).
35. Marques-Pereira, J. P. & Leblond, C. P. Mitosis and differentiation in the stratified squamous epithelium of the rat esophagus. *Am. J. Anat.* **117**, 73–87 (1965).
36. Leblond, C. P., Clermont, Y. & Nadler, N. J. The pattern of stem cell renewal in three epithelia. (esophagus, intestine and testis). *Proc. Can. Cancer Conf.* **7**, 3–30 (1967).
37. Doupe, D. P. et al. A single progenitor population switches behavior to maintain and repair esophageal epithelium. *Science* **337**, 1091–1093 (2012).
38. Seery, J. P. & Watt, F. M. Asymmetric stem-cell divisions define the architecture of human oesophageal epithelium. *Curr. Biol.* **10**, 1447–1450 (2000).
39. Croagh, D., Phillips, W. A., Redvers, R., Thomas, R. J. & Kaur, P. Identification of candidate murine esophageal stem cells using a combination of cell kinetic studies and cell surface markers. *Stem Cells* **25**, 313–318 (2007).
40. DeWard, A. D., Cramer, J. & Lagasse, E. Cellular heterogeneity in the mouse esophagus implicates the presence of a nonquiescent epithelial stem cell population. *Cell Rep.* **9**, 701–711 (2014).
41. Giroux, V. et al. Long-lived keratin 15+ esophageal progenitor cells contribute to homeostasis and regeneration. *J. Clin. Invest.* **127**, 2378–2391 (2017).
42. Barbera, M. et al. The human squamous oesophagus has widespread capacity for clonal expansion from cells at diverse stages of differentiation. *Gut* **64**, 11–19 (2015).
43. Rock, J. R. et al. Basal cells as stem cells of the mouse trachea and human airway epithelium. *Proc. Natl Acad. Sci. USA* **106**, 12771–12775 (2009).
44. Rawlins, E. L. et al. The role of Scgb1a1+ Clara cells in the long-term maintenance and repair of lung airway, but not alveolar, epithelium. *Cell Stem Cell* **4**, 525–534 (2009).
45. Rawlins, E. L. & Hogan, B. L. Ciliated epithelial cell lifespan in the mouse trachea and lung. *Am. J. Physiol. Lung Cell. Mol. Physiol.* **295**, L231–L234 (2008).
46. Barkauskas, C. E. et al. Type 2 alveolar cells are stem cells in adult lung. *J. Clin. Invest.* **123**, 3025–3036 (2013).
47. Desai, T. J., Brownfield, D. G. & Krasnow, M. A. Alveolar progenitor and stem cells in lung development, renewal and cancer. *Nature* **507**, 190–194 (2014).
48. Tata, P. R. et al. Dedifferentiation of committed epithelial cells into stem cells in vivo. *Nature* **503**, 218–223 (2013).
49. Rock, J. R. & Hogan, B. L. Epithelial progenitor cells in lung development, maintenance, repair, and disease. *Annu. Rev. Cell Dev. Biol.* **27**, 493–512 (2011).
50. Pardo-Saganta, A. et al. Injury induces direct lineage segregation of functionally distinct airway basal stem/progenitor cell subpopulations. *Cell Stem Cell* **16**, 184–197 (2015).
51. Vogelstein, B. et al. Cancer genome landscapes. *Science* **339**, 1546–1558 (2013).
52. Pickering, C. R. et al. Mutational landscape of aggressive cutaneous squamous cell carcinoma. *Clin. Cancer Res.* **20**, 6582–6592 (2014).
53. South, A. P. et al. NOTCH1 mutations occur early during cutaneous squamous cell carcinogenesis. *J. Invest. Dermatol.* **134**, 2630–2638 (2014).
54. Wang, N. J. et al. Loss-of-function mutations in Notch receptors in cutaneous and lung squamous cell carcinoma. *Proc. Natl Acad. Sci. USA* **108**, 17761–17766 (2011).
55. The Cancer Genome Atlas Research, N. et al. Integrated genomic characterization of oesophageal carcinoma. *Nature* **541**, 169–175 (2017).
56. Song, Y. et al. Identification of genomic alterations in oesophageal squamous cell cancer. *Nature* **509**, 91–95 (2014).
57. Lin, D. C. et al. Genomic and molecular characterization of esophageal squamous cell carcinoma. *Nat. Genet.* **46**, 467–473 (2014).
58. Gao, Y. B. et al. Genetic landscape of esophageal squamous cell carcinoma. *Nat. Genet.* **46**, 1097–1102 (2014).
59. The Cancer Genome Atlas, N. Comprehensive genomic characterization of head and neck squamous cell carcinomas. *Nature* **517**, 576–582 (2015).
60. Agrawal, N. et al. Exome sequencing of head and neck squamous cell carcinoma reveals inactivating mutations in NOTCH1. *Science* **333**, 1154–1157 (2011).
61. Seiwert, T. Y. et al. Integrative and comparative genomic analysis of HPV-positive and HPV-negative head and neck squamous cell carcinomas. *Clin. Cancer Res.* **21**, 632–641 (2015).
62. Stransky, N. et al. The mutational landscape of head and neck squamous cell carcinoma. *Science* **333**, 1157–1160 (2011).
63. Lechner, M. et al. Targeted next-generation sequencing of head and neck squamous cell carcinoma identifies novel genetic alterations in HPV+ and HPV- tumors. *Genome Med.* **5**, 49 (2013).
64. Pickering, C. R. et al. Integrative genomic characterization of oral squamous cell carcinoma identifies frequent somatic drivers. *Cancer Discov.* **3**, 770–781 (2013).
65. The Cancer Genome Atlas Research, N. Comprehensive genomic characterization of squamous cell lung cancers. *Nature* **489**, 519–525 (2012).
66. Kim, Y. et al. Integrative and comparative genomic analysis of lung squamous cell carcinomas in East Asian patients. *J. Clin. Oncol.* **32**, 121–128 (2014).
67. Li, C. et al. Whole exome sequencing identifies frequent somatic mutations in cell-cell adhesion genes in chinese patients with lung squamous cell carcinoma. *Sci. Rep.* **5**, 14237 (2015).
68. The Cancer Genome Atlas Research, N. et al. Integrated genomic and molecular characterization of cervical cancer. *Nature* **543**, 378–384 (2017).
69. Ojesina, A. I. et al. Landscape of genomic alterations in cervical carcinomas. *Nature* **506**, 371–375 (2014).
70. Chen, J. The cell-cycle arrest and apoptotic functions of p53 in tumor initiation and progression. *Cold Spring Harbor Perspect. Med.* **6**, a026104 (2016).
71. Weinberg, R. A. The retinoblastoma protein and cell cycle control. *Cell* **81**, 323–330 (1995).
72. Baldin, V., Lukas, J., Marcote, M. J., Pagano, M. & Draetta, G. Cyclin D1 is a nuclear protein required for cell cycle progression in G1. *Genes Dev.* **7**, 812–821 (1993).
73. Meyer, N. & Penn, L. Z. Reflecting on 25 years with MYC. *Nat. Rev. Cancer* **8**, 976–990 (2008).
74. Downward, J. Targeting RAS signalling pathways in cancer therapy. *Nat. Rev. Cancer* **3**, 11–22 (2003).
75. Vivanco, I. & Sawyers, C. L. The phosphatidylinositol 3-Kinase AKT pathway in human cancer. *Nat. Rev. Cancer* **2**, 489–501 (2002).
76. Lemmon, M. A. & Schlessinger, J. Cell signaling by receptor tyrosine kinases. *Cell* **141**, 1117–1134 (2010).
77. Quintanilla, M., Brown, K., Ramsden, M. & Balmain, A. Carcinogen-specific mutation and amplification of Ha-ras during mouse skin carcinogenesis. *Nature* **322**, 78–80 (1986).
78. Spencer, J. M., Kahn, S. M., Jiang, W., DeLeo, V. A. & Weinstein, I. B. Activated ras genes occur in human actinic keratoses, premalignant precursors to squamous cell carcinomas. *Arch. Dermatol.* **131**, 796–800 (1995).
79. Koch, U., Lehal, R. & Radtke, F. Stem cells living with a Notch. *Development* **140**, 689–704 (2013).
80. Nowell, C. S. & Radtke, F. Notch as a tumour suppressor. *Nat. Rev. Cancer* **17**, 145–159 (2017).
81. Nicolas, M. et al. Notch1 functions as a tumor suppressor in mouse skin. *Nat. Genet.* **33**, 416–421 (2003).
82. Blanpain, C., Lowry, W. E., Pasolli, H. A. & Fuchs, E. Canonical notch signaling functions as a commitment switch in the epidermal lineage. *Genes Dev.* **20**, 3022–3035 (2006).
83. Rangarajan, A. et al. Notch signaling is a direct determinant of keratinocyte growth arrest and entry into differentiation. *EMBO J.* **20**, 3427–3436 (2001).
84. Watanabe, H. et al. SOX2 and p63 colocalize at genetic loci in squamous cell carcinomas. *J. Clin. Invest.* **124**, 1636–1645 (2014).
85. Crum, C. P. & McKeon, F. D. p63 in epithelial survival, germ cell surveillance, and neoplasia. *Annu. Rev. Pathol.* **5**, 349–371 (2010).
86. Melino, G., Memmi, E. M., Pelicci, P. G. & Bernassola, F. Maintaining epithelial stemness with p63. *Sci. Signal.* **8**, re9 (2015).
87. Blanpain, C. & Fuchs, E. p63: revving up epithelial stem-cell potential. *Nat. Cell Biol.* **9**, 731–733 (2007).
88. Dotto, G. P. Notch tumor suppressor function. *Oncogene* **27**, 5115–5123 (2008).
89. Boumahdi, S. et al. SOX2 controls tumour initiation and cancer stem-cell functions in squamous-cell carcinoma. *Nature* **511**, 246–250 (2014).
90. Siegle, J. M. et al. SOX2 is a cancer-specific regulator of tumour initiating potential in cutaneous squamous cell carcinoma. *Nat. Commun.* **5**, 4511 (2014).
91. Dawson, M. A. & Kouzarides, T. Cancer epigenetics: from mechanism to therapy. *Cell* **150**, 12–27 (2012).
92. Fickie, M. R. et al. Adults with Sotos syndrome: review of 21 adults with molecularly confirmed NSD1 alterations, including a detailed case report of the oldest person. *Am. J. Med. Genet. A* **155A**, 2105–2111 (2011).
93. Papillon-Cavanagh, S. et al. Impaired H3K36 methylation defines a subset of head and neck squamous cell carcinomas. *Nat. Genet.* **49**, 180–185 (2017).
94. Hoadley, K. A. et al. Multiplatform analysis of 12 cancer types reveals molecular classification within and across tissues of origin. *Cell* **158**, 929–944 (2014).
95. Liu, F., Wang, L., Perna, F. & Nimer, S. D. Beyond transcription factors: how oncogenic signalling reshapes the epigenetic landscape. *Nat. Rev. Cancer* **16**, 359–372 (2016).
96. Lapouge, G. et al. Identifying the cellular origin of squamous skin tumors. *Proc. Natl Acad. Sci. USA* **108**, 7431–7436 (2011).
97. White, A. C. et al. Defining the origins of Ras/p53-mediated squamous cell carcinoma. *Proc. Natl Acad. Sci. USA* **108**, 7425–7430 (2011).

**This study demonstrates that only stem cells and not transit-amplifying cells from the epidermis are able to form CSCC.**

**References 96 and 97 report that only stem cells and not hair follicle transit-amplifying cells are able to give rise to CSCC.**



98. Karia, P. S., Han, J. & Schmults, C. D. Cutaneous squamous cell carcinoma: estimated incidence of disease, nodal metastasis, and deaths from disease in the United States, 2012. *J. Am. Acad. Dermatol.* **68**, 957–966 (2013).
99. Arnault, J. P. et al. Keratoacanthomas and squamous cell carcinomas in patients receiving sorafenib. *J. Clin. Oncol.* **27**, e59–61 (2009).
100. Abel, E. L., Angel, J. M., Kiguchi, K. & DiGiovanni, J. Multi-stage chemical carcinogenesis in mouse skin: fundamentals and applications. *Nat. Protoc.* **4**, 1350–1362 (2009).
101. Van Duuren, B. L., Sivak, A., Katz, C., Seidman, I. & Melchionne, S. The effect of aging and interval between primary and secondary treatment in two-stage carcinogenesis on mouse skin. *Cancer Res.* **35**, 502–505 (1975).
102. Morris, R. J. Keratinocyte stem cells: targets for cutaneous carcinogens. *J. Clin. Invest.* **106**, 3–8 (2000).
103. Argyris, T. S. & Slaga, T. J. Promotion of carcinomas by repeated abrasion in initiated skin of mice. *Cancer Res.* **41**, 5193–5195 (1981).
104. Li, S. et al. A keratin 15 containing stem cell population from the hair follicle contributes to squamous papilloma development in the mouse. *Mol. Carcinog.* **52**, 751–759 (2013).
105. Morris, R. J., Tryson, K. A. & Wu, K. Q. Evidence that the epidermal targets of carcinogen action are found in the interfollicular epidermis of infundibulum as well as in the hair follicles. *Cancer Res.* **60**, 226–229 (2000).
106. Balmain, A., Ramsden, M., Bowden, G. T. & Smith, J. Activation of the mouse cellular Harvey-ras gene in chemically induced benign skin papillomas. *Nature* **307**, 658–660 (1984).
107. Bizub, D., Wood, A. W. & Skalka, A. M. Mutagenesis of the Ha-ras oncogene in mouse skin tumors induced by polycyclic aromatic hydrocarbons. *Proc. Natl Acad. Sci. USA* **83**, 6048–6052 (1986).
108. Nassar, D., Latil, M., Boeckx, B., Lambrechts, D. & Blanpain, C. Genomic landscape of carcinogen-induced and genetically induced mouse skin squamous cell carcinoma. *Nat. Med.* **21**, 946–954 (2015).
109. Bailleul, B. et al. Skin hyperkeratosis and papilloma formation in transgenic mice expressing a ras oncogene from a suprabasal keratin promoter. *Cell* **62**, 697–708 (1990).
110. Brown, K., Strathdee, D., Bryson, S., Lambie, W., Balmain, A. The malignant capacity of skin tumours induced by expression of a mutant H-ras transgene depends on the cell type targeted. *Curr. Biol.* **8**, 516–524 (1998).
111. Latil, M. et al. Cell-Type-Specific Chromatin States Differentially Prime Squamous Cell Carcinoma Tumor-Initiating Cells for Epithelial to Mesenchymal Transition. *Cell Stem Cell* **20**, 191–204.e5 (2017). **This study demonstrates for the first time that the cancer cell of origin determines the tumour phenotype, occurrence of EMT and aggressiveness in CSCCs.**
112. Kamangar, F., Dores, G. M. & Anderson, W. F. Patterns of cancer incidence, mortality, and prevalence across five continents: defining priorities to reduce cancer disparities in different geographic regions of the world. *J. Clin. Oncol.* **24**, 2137–2150 (2006).
113. Andrews, E., Seaman, W. T. & Webster-Cyriaque, J. Oropharyngeal carcinoma in non-smokers and non-drinkers: a role for HPV. *Oral Oncol.* **45**, 486–491 (2009).
114. zur Hausen, H. Papillomaviruses and cancer: from basic studies to clinical application. *Nat. Rev. Cancer* **2**, 342–350 (2002).
115. Kutler, D. I. et al. High incidence of head and neck squamous cell carcinoma in patients with Fanconi anemia. *Arch. Otolaryngol. Head Neck Surg.* **129**, 106–112 (2003).
116. Califano, J. et al. Genetic progression model for head and neck cancer: implications for field cancerization. *Cancer Res.* **56**, 2488–2492 (1996).
117. Hawkins, B. L. et al. 4NQO carcinogenesis: a mouse model of oral cavity squamous cell carcinoma. *Head Neck* **16**, 424–432 (1994).
118. Tang, X. H., Scognamiglio, T. & Gudas, L. J. Basal stem cells contribute to squamous cell carcinomas in the oral cavity. *Carcinogenesis* **34**, 1158–1164 (2013).
119. Caulin, C. et al. Inducible activation of oncogenic K-ras results in tumor formation in the oral cavity. *Cancer Res.* **64**, 5054–5058 (2004).
120. Raimondi, A. R., Vitale-Cross, L., Amorphimoltham, P., Gutkind, J. S. & Molinolo, A. Rapid development of salivary gland carcinomas upon conditional expression of K-ras driven by the cytokeratin 5 promoter. *Am. J. Pathol.* **168**, 1654–1665 (2006).
121. Raimondi, A. R., Molinolo, A. & Gutkind, J. S. Rapamycin prevents early onset of tumorigenesis in an oral-specific K-ras and p53 two-hit carcinogenesis model. *Cancer Res.* **69**, 4159–4166 (2009).
122. Bornstein, S. et al. Smad4 loss in mice causes spontaneous head and neck cancer with increased genomic instability and inflammation. *J. Clin. Invest.* **119**, 3408–3419 (2009).
123. Bian, Y. et al. Loss of TGF- $\beta$  signaling and PTEN promotes head and neck squamous cell carcinoma through cellular senescence evasion and cancer-related inflammation. *Oncogene* **31**, 3322–3332 (2012).
124. Nakagawa, H. et al. The targeting of the cyclin D1 oncogene by an Epstein-Barr virus promoter in transgenic mice causes dysplasia in the tongue, esophagus and forestomach. *Oncogene* **14**, 1185–1190 (1997).
125. Opitz, O. G. et al. A mouse model of human oral-esophageal cancer. *J. Clin. Invest.* **110**, 761–769 (2002).
126. Tetreault, M. P. et al. Klf4 overexpression activates epithelial cytokines and inflammation-mediated esophageal squamous cell cancer in mice. *Gastroenterology* **139**, 2124–2134.e9 (2010).
127. Stairs, D. B. et al. Deletion of p120-catenin results in a tumor microenvironment with inflammation and cancer that establishes it as a tumor suppressor gene. *Cancer Cell* **19**, 470–483 (2011).
128. Frede, J., Greulich, P., Nagy, T., Simons, B. D. & Jones, P. H. A single dividing cell population with imbalanced fate drives oesophageal tumour growth. *Nat. Cell Biol.* **18**, 967–978 (2016).
129. Alcolea, M. P. et al. Differentiation imbalance in single oesophageal progenitor cells causes clonal immortalization and field change. *Nat. Cell Biol.* **16**, 615–622 (2014). **This study reports that equipotent oesophageal progenitors are the cells of origin of ESCC by cell fate imbalance.**
130. Bass, A. J. et al. SOX2 is an amplified lineage-survival oncogene in lung and esophageal squamous cell carcinomas. *Nat. Genet.* **41**, 1238–1242 (2009).
131. Liu, K. et al. Sox2 cooperates with inflammation-mediated Stat3 activation in the malignant transformation of foregut basal progenitor cells. *Cell Stem Cell* **12**, 304–315 (2013). **This study reports that oesophageal basal cells but not differentiated cells lead to ESCC upon activation of STAT3 and overexpression of SOX2.**
132. Jemal, A. et al. Global cancer statistics. *CA Cancer J. Clin.* **61**, 69–90 (2011).
133. The Cancer Genome Atlas Research, N. Comprehensive molecular profiling of lung adenocarcinoma. *Nature* **511**, 543–550 (2014).
134. Campbell, J. D. et al. Distinct patterns of somatic genome alterations in lung adenocarcinomas and squamous cell carcinomas. *Nat. Genet.* **48**, 607–616 (2016).
135. Chen, Z., Fillmore, C. M., Hammerman, P. S., Kim, C. F. & Wong, K. K. Non-small-cell lung cancers: a heterogeneous set of diseases. *Nat. Rev. Cancer* **14**, 535–546 (2014).
136. Ji, H. et al. LKB1 modulates lung cancer differentiation and metastasis. *Nature* **448**, 807–810 (2007).
137. Xu, C. et al. Loss of Lkb1 and Pten leads to lung squamous cell carcinoma with elevated PD-L1 expression. *Cancer Cell* **25**, 590–604 (2014).
138. Que, J., Luo, X., Schwartz, R. J. & Hogan, B. L. Multiple roles for Sox2 in the developing and adult mouse trachea. *Development* **136**, 1899–1907 (2009).
139. Mukhopadhyay, A. et al. Sox2 cooperates with Lkb1 loss in a mouse model of squamous cell lung cancer. *Cell Rep.* **8**, 40–49 (2014).
140. Kim, C. F. et al. Identification of bronchioalveolar stem cells in normal lung and lung cancer. *Cell* **121**, 823–835 (2005).
141. Lu, Y. et al. Evidence that SOX2 overexpression is oncogenic in the lung. *PLoS ONE* **5**, e11022 (2010).
142. Xu, X. et al. The cell of origin and subtype of K-Ras-induced lung tumors are modified by Notch and Sox2. *Genes Dev.* **28**, 1929–1939 (2014).
143. Ferone, G. et al. SOX2 is the determining oncogenic switch in promoting lung squamous cell carcinoma from different cells of origin. *Cancer Cell* **30**, 519–532 (2016). **This study demonstrates that three different lung lineages (basal, secretory and AT2 cells) represent the cell of origin of LSCC and that SOX2 restricts tumour lineage to SCC.**
144. Schwitala, S. et al. Intestinal tumorigenesis initiated by dedifferentiation and acquisition of stem-cell-like properties. *Cell* **152**, 25–38 (2013).
145. Rodriguez-Paredes, M. et al. Methylation profiling identifies two subclasses of squamous cell carcinoma related to distinct cells of origin. *Nat. Commun.* **9**, 577 (2018).
146. Barker, N. et al. Crypt stem cells as the cells-of-origin of intestinal cancer. *Nature* **457**, 608–611 (2009).
147. Tomasetti, C., Li, L. & Vogelstein, B. Stem cell divisions, somatic mutations, cancer etiology, and cancer prevention. *Science* **355**, 1330–1334 (2017).
148. Tomasetti, C. & Vogelstein, B. Cancer risk: role of environment-response. *Science* **347**, 729–731 (2015).
149. Zhu, L. et al. Multi-organ Mapping of Cancer Risk. *Cell* **166**, 1132–1146.e7 (2016).

# Acknowledgements

C.B. is an investigator of WELBIO. A.S.-D. is supported by a fellowship of the Belgian Fund for Scientific Research (FNRS). CB is supported by the FNRS, the Fondation contre le Cancer, the Université Libre de Bruxelles Fondation, the Fondation Baillet Latour, Worldwide Cancer Research and a consolidator grant from the European Research Council.

# Author contributions

Both authors read the literature, discussed the contents of the Review and wrote the article.

# Competing interests

The authors declare no competing interests.

# Publisher's note

Springer Nature remains neutral with regard to jurisdictional claims in published maps and institutional affiliations.